

INSTALLATION HIGHLIGHTS • 440 SOUND BARRIER WALLS AND CEILING



*Sensible. Sound.
Solutions.*



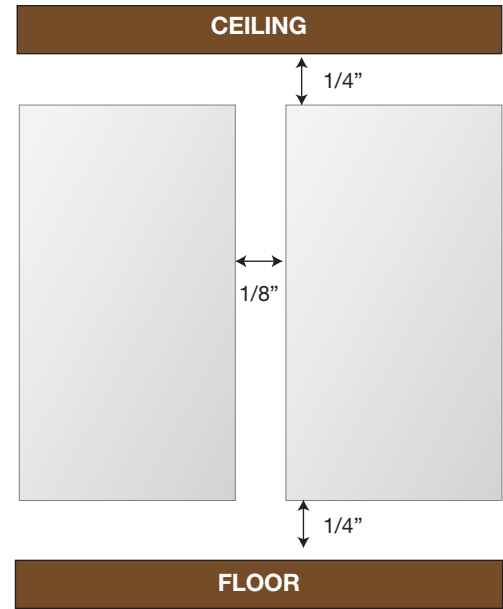
The mark of
responsible forestry



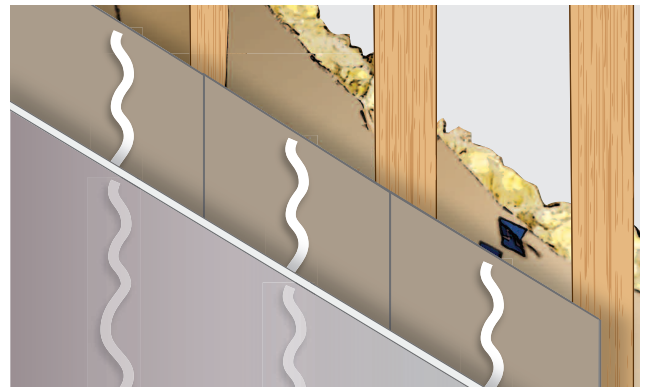
1 Acclimate materials – Make sure you place the material in the location in which they will be installed for at least 24 hours prior to installation.



3 Attach 440 SB, with either nails or screws, that penetrate the studs $\frac{3}{4}$ " of an inch. The fasteners should be $\frac{3}{8}$ " of an inch off of the board edge spaced 12" apart around the edges and 24" apart in the field of the board.



2 Position the 440 SB on the studs allowing for a **$\frac{1}{8}$ " gap between sheets** and a **$\frac{1}{4}$ " gap at the floor and ceiling.**



4 Apply $\frac{3}{8}$ " bead of adhesive to gypsum wallboard that meets the specification APA AFG-01 (such as Liquid Nails or PL400) in single verticle beads that are in between the studs.

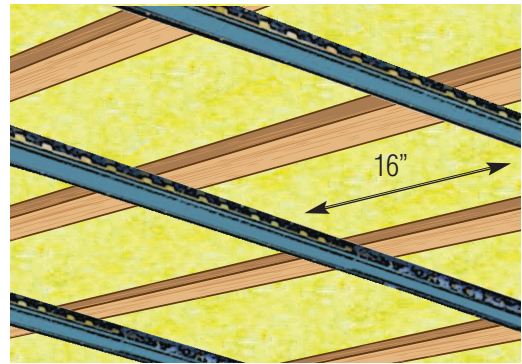
www.homasote.com

INSTALLATION HIGHLIGHTS • 440 SOUND BARRIER WALLS AND CEILING

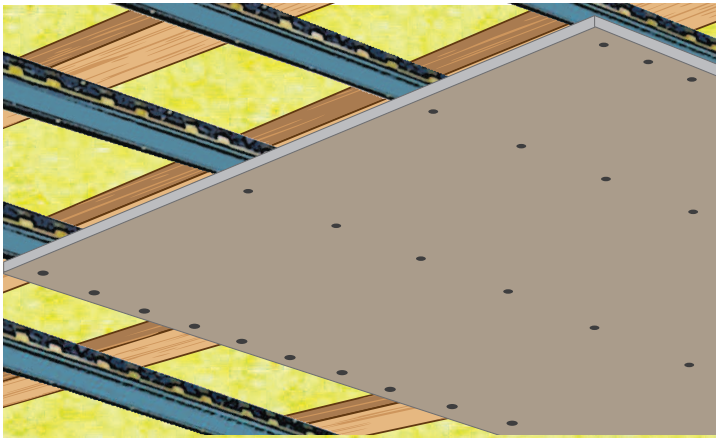


- 5** Apply gypsum wallboard staggering the joints so the edges do not fall onto studs and fasten to the 440 SB panel only (not through the studs) using #10 1-1/2" laminating screws (rock to rock screws).
- End of wall installation

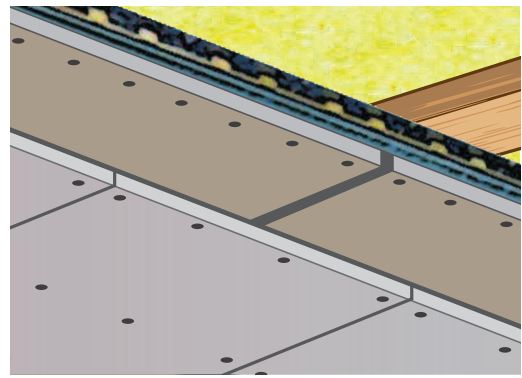
CEILING



- 1** Install resilient channels (or equal), spaced a maximum 16" o.c., to ceiling joists. Use sufficient length screws to penetrate into the ceiling joists a minimum of 3/4".



- 2** Screw Homasote panels using standard drywall screws directly into resilient channels 4" - 6" o.c. along panel edges and 10" - 12" o.c. at intermediate supports. Allow for 3/16" expansion joint at all panel edges.



- 3** Gypsum wallboard is to be installed, **staggering all seams**, over the Homasote panels and **screwed into the resilient channels** as per gypsum wallboard manufacturer's installation instructions.

Please see our complete installation instructions for further details.

440 SoundBarrier®

HOMASOTE®

Sensible. Sound.
Solutions.



800-257-9491 • Technical Support call Ext. 1332 or e-mail techhelp@homasote.com

www.homasote.com