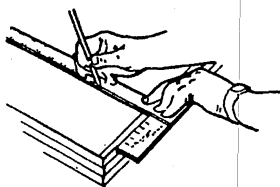
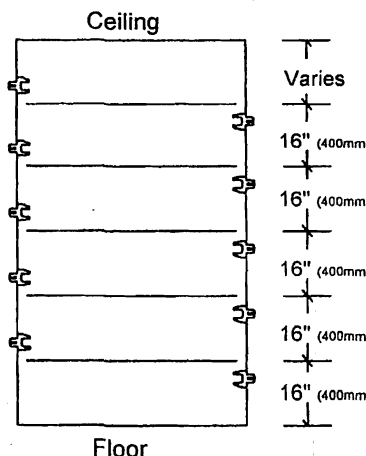


# CYMAX EDGE-CLIP INSTALLATION

**1**

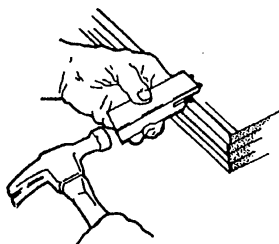


Trim Panel to proper height.  
Layout back of panel by drawing layout lines at 16" (400mm) intervals.  
(Lines can be carried down sides of stacked panels with a chalk line)



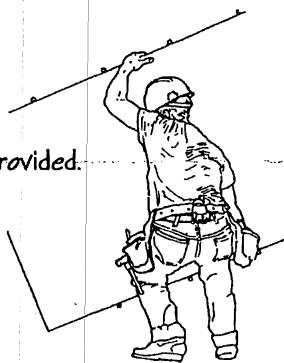
Locate clips above the line on one side and below on the opposite side.  
(Staggered clip layout creates a tongue & groove panel joint)

**2**



Seat the clips with the handy Clip Driver provided.  
(Do not damage panel edge)

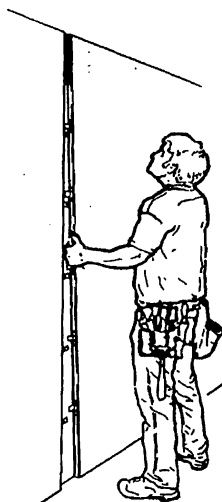
**3**



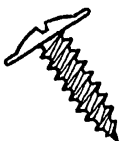
Position panel (with clips installed) on any wood or metal framing.  
Tighten the joint with floor Leverage tool.  
Screw to floor and ceiling track with ordinary drywall screws.



**4**



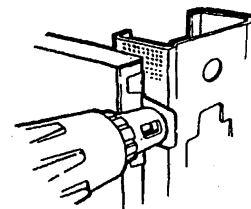
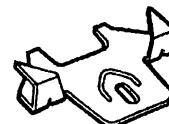
The clips on the next panel simply slide behind the fixed panel.  
(Clips have patented screw slots so panels can adjust for perfect joints)



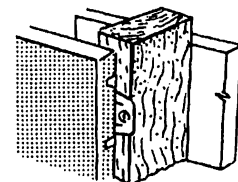
Use Cymax Low-profile screws to secure one series of clips.  
(Only one side of each panel is directly screw fastened)

A few adhesive dabs on center studs can correct bowed panels and stiffen the wall.

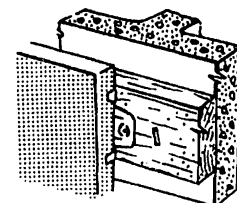
Stagger joints on opposite sides of the wall when possible.



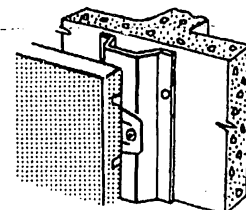
Steel Stud



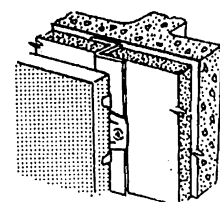
Wood Stud



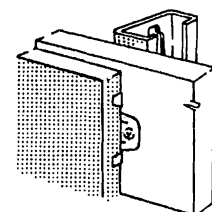
Wood Furring



Steel Furring



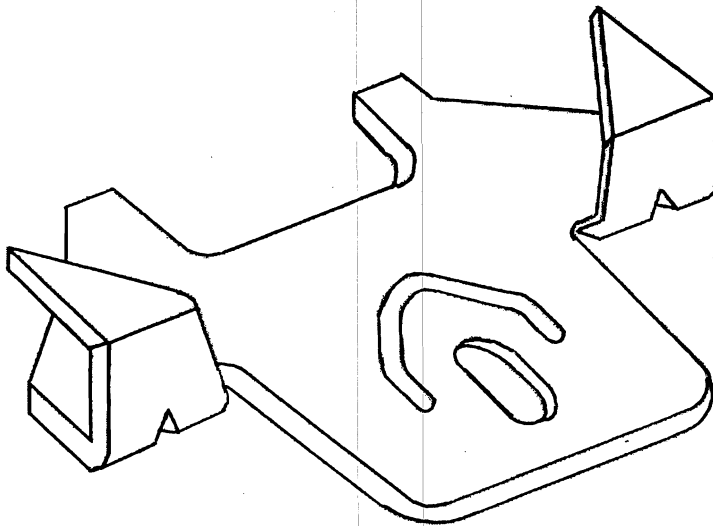
Z-Metal Furring



Double Wall

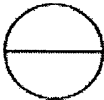
**homasote**  
COMPANY

HOMASOTE COMPANY  
932 LOWER FERRY ROAD  
WEST TRENTON, N J 08628  
TOLL FREE 1- 800-257-9491 Ext. 1500  
PHONE: (609) 883-3300 Ext. 1500  
FAX: (609) 883-3497  
[www.homasote.com](http://www.homasote.com)



**NOTES:**

1. INSTALLATION TO BE COMPLETED IN ACCORDANCE WITH MANUFACTURERS SPECIFICATIONS.
2. DO NOT SCALE DRAWINGS.
3. CONTRACTORS NOTE: FOR PRODUCT AND COMPANY INFORMATION VISIT [www.CADdetails.com/info](http://www.CADdetails.com/info)  
REFERENCE NUMBER 739-021.



**CYMAX WALL CLIP INSTALLATION**

ECB - EDGE CLIP GRAPHIC