

## Finally...Excellent Sound Control For Both 16" and 24" o.c. Steel

In renovation work requires access to only 1-side of wall • 98% recycled material (high post-consumer)

5/8" Type X

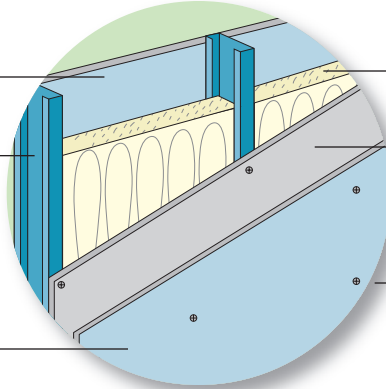
gypsum wallboard

3-5/8" 25 gauge metal

studs spaced 16" OR 24" o.c.

5/8" Type X gypsum wallboard decoupled and attached to the

**440 SoundBarrier® ONLY**



3-1/2" fiberglass OR

3" mineral wool insulation

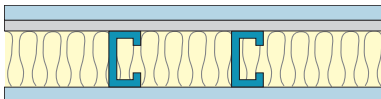
1/2" **440 SoundBarrier®** is

attached directly to metal studs on 1-side

1-1/2" Laminating Screws

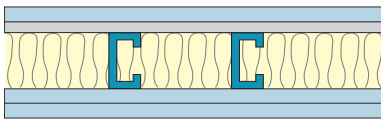
(Rock to Rock)

### 3-5/8" 25 Gauge Single Steel Walls @ 16" o.c. and 24" o.c.



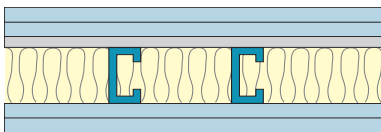
5/8" Type X Gypsum Wallboard  
1/2" 440 SoundBarrier  
3-1/2" fiberglass or 3" mineral wool batts  
5/8" Type X Gypsum Wallboard

STC	Stud Spacing	Report	Fire	UL Design Number	Wall Thickness
54	16"	NGC-* (FG) NGC-* (MW)	1-Hour	U465	5-3/8"
55	24"	NGC-2011039 (FG) NGC-2011038 (MW)	1-Hour	U465	5-3/8"



5/8" Type X Gypsum Wallboard  
1/2" 440 SoundBarrier  
3-1/2" fiberglass or 3" mineral wool batts  
5/8" Type X Gypsum Wallboard  
5/8" Type X Gypsum Wallboard

STC	Stud Spacing	Report	Fire	UL Design Number	Wall Thickness
58	16"	NGC-* (FG) NGC-* (MW)	1-Hour	U465	6"
59	24"	est.	1-Hour	U465	6"



5/8" Type X Gypsum Wallboard  
5/8" Type X Gypsum Wallboard  
1/2" 440 SoundBarrier  
3-1/2" fiberglass or 3" mineral wool batts  
5/8" Type X Gypsum Wallboard  
5/8" Type X Gypsum Wallboard

STC	Stud Spacing	Report	Fire	UL Design Number	Wall Thickness
59	16"	NGC-* (FG) NGC-* (MW)	2-Hour*	U411*	6-5/8"
60	24"	est.	2-Hour*	U411*	6-5/8"

\* Pending

# HOMASOTE®

Sensible. Sound.  
Solutions.



800-257-9491 • Technical Support call Ext. 1332 or e-mail [techhelp@homasote.com](mailto:techhelp@homasote.com)

[www.homasote.com](http://www.homasote.com)